

Orchestra Sight-Reading Levels

Level .5 – (2022 – N-8EE)

Key:

Concert D, G Major.

No key change.

Meter:



Listed below with no meter change.

Rhythm:

BASIC PATTERNS:



Length:

Maximum of two (2) minutes (single movement piece or one movement of a two movement piece).

Level I – N-8EE – (2022 – 8EEE-8EEEE, 9E-9EE, 1A/2A)

Key:

Concert D, G Major.

No key change.

Meter:



Maximum of two meter changes.

Rhythm:

BASIC PATTERNS:



Length:

Maximum of two (2) minutes (single movement piece or one movement of a two movement piece).

Level II – 8EEE-8EEEE, 9E-9EE, 1A/2A – (2022 – 9EEE-9EEEE, 3A)

Same criteria as Level I - EXCEPT:

Key:

Concert D, G Major (and C Major for full orchestra).

No key change.

Length:

Maximum of three (3) minutes (single movement piece or both movements of a two movement piece).

Level III – 9EEE-9EEEE, 3A – (2022 – 4A)

Key:

Concert D, G, C Major (and F Major for full orchestra) / b, a, e minor

Maximum of two (2) keys changes.

Meter:



Maximum of two (2) meter changes.

Rhythm:

BASIC PATTERNS



Length:

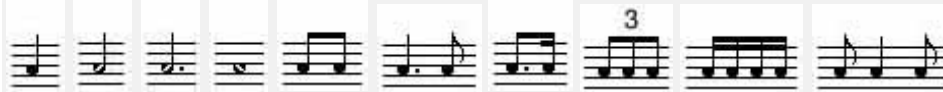
Maximum of three (3) minutes (can be multi-movement).

Level IV – 4A – (2022 – 5A/6A)

Same criteria as Level III - EXCEPT:

Rhythm:

BASIC PATTERNS



Length:

Maximum of four (4) minutes (can be multi-movement).

Level V – 5A/6A – (2022 – 7A)

Key:

Concert D, G, F, C Major / b, e, d, a minor.

Maximum of three (3) key changes.

Meter:



Maximum of three (3) meter changes.

Rhythm:

BASIC PATTERNS



Length:

Maximum of five (5) minutes (can be multi-movement).

Level VI – 7A – (2022 – None)

Key:

Concert D, G, F, C, Bb Major / b, e, d, a, g minor.

Maximum of three (3) key changes.

Meter:



Maximum of three (3) meter changes.

Rhythm:

BASIC PATTERNS



Length:

Maximum of five (5) minutes (can be multi-movement).

Sight-Reading Requirements for 2nd, 3rd, 4th, and 5th Bands/Orchestras

- Senior high school second bands and orchestras will read 2 levels lower than the classification of their first ensemble.
- Junior high/middle school second bands will read 1 level lower than the classification of their first ensemble.
- Third, fourth, and fifth bands/orchestras will read 3 levels lower than the classification of their first ensemble.