

Band Sight-Reading Levels

Level .5 – (2022 – N-8EE)

Key:

Concert B-flat, E-flat with no accidentals or key changes

Meter:



Rhythm:

BASIC PATTERNS:



PERCUSSION ONLY



Length:

One or less.

Level I – N-8EE – (2022 – 8EEE-8EEEE, 9E-9EE, 1A/2A)

Key:

Concert F, B-flat, E-flat Major.

Maximum of one key change.

Meter:



Maximum of one meter change.

Rhythm:

BASIC PATTERNS:



PERCUSSION ONLY



Length:

Two and one-half (2 1/2) minutes or less.

Level II – 8EEE-8EEEE, 9E-9EE, 1A/2A – (2022 – 9EEE-9EEEE, 3A)

Same criteria as Level I except:

Key:

Maximum of two (2) keys with a maximum of two (2) key changes

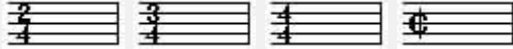
Level III – 9EEE-9EEEE, 3A – (2022 – 4A)

Key:

Concert F, B-flat, E-flat Major.

Maximum of two (2) keys with a maximum of two (2) key changes.

Meter:



Maximum of two (2) meters with a maximum of two (2) meter changes.

Rhythm:

BASIC PATTERNS



PERCUSSION ONLY



Length:

Three (3) minutes or less.

Level IV – 4A – (2022 – 5A/6A)

Same criteria as Level III except:

Key:

Add A-flat

Rhythm:

All sixteenths can be used for percussion AND wind players.

Level V – 5A/6A – (2022 – 7A)

Key:

Concert F, B-flat, E-flat, A-flat Major.

Maximum of two (2) key changes.

Meter:



Maximum of two (2) meter changes.

Rhythm:

Basic Patterns



Length:

Four (4) minutes or less.

Level VI – 7A – (2022 – None)

Key:

Concert F, B-flat, E-flat, A-flat Major.

Maximum of three (3) key changes.

Meter:



Maximum of three (3) meter changes.

Rhythm:

Same as Basic Patterns for Level V.

Length:

Four and one-half (4 1/2) minutes or less.

Sight-Reading Requirements for 2nd, 3rd, 4th, and 5th Bands/Orchestras

- (a) Senior high school second bands and orchestras will read 2 levels lower than the classification of their first ensemble.
- (b) Junior high/middle school second bands will read 1 level lower than the classification of their first ensemble.
- (c) Third, fourth, and fifth bands/orchestras will read 3 levels lower than the classification of their first ensemble.