

# ARKANSAS SOUTH REGION ORCHESTRA

## JUNIOR HIGH STRING AUDITION MATERIALS ~ SET I (2017)

There are two junior high performing groups at the South Region Orchestra Clinic. The top players in each section according to rank earn a seat in the Concert Orchestra, and the second highest group of players is invited to join the String Orchestra.

**CONCERT ORCHESTRA:** This first-tier group utilizes 16 Violin I, 16 Violin II, 10 Viola, 10 Cello, and Bases TBD, as well as a full complement of winds, brass, and percussion for a full symphonic orchestral experience. The difficulty of the music is typically what students might encounter in their third year of playing.

**STRING ORCHESTRA:** This second-tier group uses the same number of string players per section as the Concert Orchestra but is a string-only ensemble. The difficulty of the music is typically what students might encounter in their second year of playing.

**\*\*REMINDER:** Individual String applicants must be registered members of ASBOA BEFORE they will be permitted to participate in any ASBOA-sanctioned event. For more information on this, see the document titled "Information for Individual String Applicants," also located on the ASBOA website.

**AUDITION MATERIAL:** All printed fingerings and bowings are required. All instruments have the first two pieces listed in common. The third piece is a solo or orchestral excerpt specific for that instrument.

### **SET I (2017)**

- 1) The Hope
- 2) The Roller Coaster
- 3)

Violin:	Mozart: Symphony No. 36 "Linz" – 4th Mvt.
Viola:	Tchaikovsky: Symphony No. 4 – Finale
Cello:	Vivaldi: Sonata No. 5 in e minor – 2nd Mvt.
Bass:	Beethoven: Symphony No. 3 "Eroica" – Finale

### **SCALES**

Required scales are those with key signatures three sharps through three flats. All scales are to be played as detaché quarter notes at 80 beats per minute with the top note repeated, NO VIBRATO. Only one major scale and one minor scale will be chosen from the following list:

- o Major Scales – TWO octaves: A, D, G, C, F, B $\flat$ , E $\flat$
- o NATURAL Minor Scales – ONE octave: f $\sharp$ , b, e, a, d, g, c

### **SIGHTREADING**

All students will be required to sightread as part of their audition. Students will have 20 seconds to look over the sightreading material, during which they may not make any sound on their instruments. At the conclusion of the 20 seconds, the judge will ask the student to play the excerpt. Students are only allowed one attempt at the sightreading material.

For more information about audition procedures or the South Region Orchestra Clinic, please reference the appropriate documents posted on the ASBOA website, [www.asboa.org](http://www.asboa.org).

# The Hope

Hebrew Melody

Moderato

Bass

*mf*

6

*f* *p*

12

1. 2.

*f* *rit.*

# The Roller Coaster

F. Wohlfahrt

Moderato

Bass

*p*

5

*f* *f*

10

15

# FINALE

Beethoven

♩ =

Contrabass



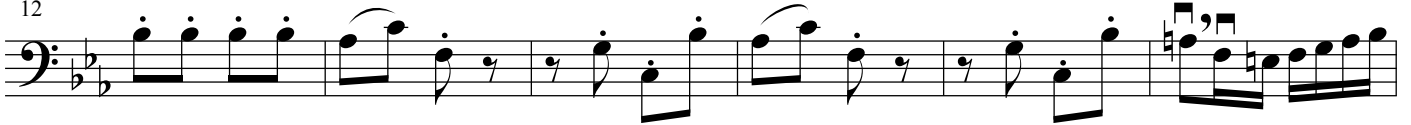
*p*

6

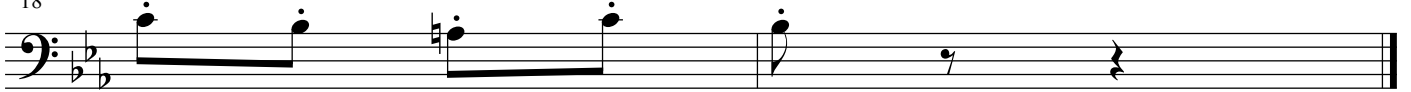


*cresc.*

12



18



# Bass Major Scales

South Region Orchestra

No vibrato, repeat top note, quarter note=80

Scales must be memorized.

Contrabass



The first line of the scale is written on a bass clef staff in 4/4 time. It begins with a C4 note and proceeds through the notes of the C major scale: C, D, E, F, G, A, B, C, B, A, G, F, E, D, C. The final C note is held for a quarter note.

9



The second line of the scale continues from the first line. It begins with a D4 note and proceeds through the notes of the C major scale: D, E, F, G, A, B, C, B, A, G, F, E, D, C. The final C note is held for a quarter note.

17



The third line of the scale continues from the second line. It begins with an E4 note and proceeds through the notes of the C major scale: E, F, G, A, B, C, B, A, G, F, E, D, C. The final C note is held for a quarter note.

25



The fourth line of the scale continues from the third line. It begins with an F4 note and proceeds through the notes of the C major scale: F, G, A, B, C, B, A, G, F, E, D, C. The final C note is held for a quarter note.

33



The fifth line of the scale continues from the fourth line. It begins with a G4 note and proceeds through the notes of the C major scale: G, A, B, C, B, A, G, F, E, D, C. The final C note is held for a quarter note.

41



The sixth line of the scale continues from the fifth line. It begins with an A4 note and proceeds through the notes of the C major scale: A, B, C, B, A, G, F, E, D, C. The final C note is held for a quarter note.

49



The seventh line of the scale continues from the sixth line. It begins with a B4 note and proceeds through the notes of the C major scale: B, C, B, A, G, F, E, D, C. The final C note is held for a quarter note.

# Bass Natural Minor Scales

South Region Orchestra

No vibrato, repeat top note, quarter note=80  
Scales must be memorized.

Contrabass

Scale 1: C minor (one sharp, F#). The scale is written in bass clef with a 4/4 time signature. It consists of 8 quarter notes: C2, D2, E2, F#2, G2, A2, B2, C3.

5

Scale 5: F# minor (two sharps, C# and F#). The scale is written in bass clef with a 4/4 time signature. It consists of 8 quarter notes: F#2, G2, A2, C#3, D3, E3, F#3, G3.

9

Scale 9: B minor (two sharps, F# and C#). The scale is written in bass clef with a 4/4 time signature. It consists of 8 quarter notes: B2, C3, D3, E3, F#3, G3, A3, B3.

13

Scale 13: E minor (three sharps, F#, C#, and G#). The scale is written in bass clef with a 4/4 time signature. It consists of 8 quarter notes: E2, F#2, G#2, A2, B2, C#3, D3, E3.

17

Scale 17: A minor (no sharps or flats). The scale is written in bass clef with a 4/4 time signature. It consists of 8 quarter notes: A2, B2, C3, D3, E3, F3, G3, A3.

21

Scale 21: D minor (one flat, Bb). The scale is written in bass clef with a 4/4 time signature. It consists of 8 quarter notes: D2, E2, F2, Bb2, C3, D3, E3, F3.

25

Scale 25: G minor (two flats, F and Cb). The scale is written in bass clef with a 4/4 time signature. It consists of 8 quarter notes: G2, A2, Bb2, Cb3, D3, E3, F3, G3.