

String bass

A.S.B.O.A. Scale Sheet

♩ = 72+

C Major

First staff of music for C Major scale, starting at measure 1. The scale is written in bass clef with a 2/4 time signature. It consists of an ascending eighth-note scale followed by a descending eighth-note scale, ending with a whole note C.

6 G Major

Second staff of music for G Major scale, starting at measure 6. The key signature has one sharp (F#). The scale is written in bass clef with a 2/4 time signature. It consists of an ascending eighth-note scale followed by a descending eighth-note scale, ending with a whole note G.

11 D Major

Third staff of music for D Major scale, starting at measure 11. The key signature has two sharps (F# and C#). The scale is written in bass clef with a 2/4 time signature. It consists of an ascending eighth-note scale followed by a descending eighth-note scale, ending with a whole note D.

16 A Major

Fourth staff of music for A Major scale, starting at measure 16. The key signature has three sharps (F#, C#, and G#). The scale is written in bass clef with a 2/4 time signature. It consists of an ascending eighth-note scale followed by a descending eighth-note scale, ending with a whole note A.

21 E Major

Fifth staff of music for E Major scale, starting at measure 21. The key signature has four sharps (F#, C#, G#, and D#). The scale is written in bass clef with a 2/4 time signature. It consists of an ascending eighth-note scale followed by a descending eighth-note scale, ending with a whole note E.

26 B Major

Sixth staff of music for B Major scale, starting at measure 26. The key signature has five sharps (F#, C#, G#, D#, and A#). The scale is written in bass clef with a 2/4 time signature. It consists of an ascending eighth-note scale followed by a descending eighth-note scale, ending with a whole note B.

31 F Major

Seventh staff of music for F Major scale, starting at measure 31. The key signature has one flat (Bb). The scale is written in bass clef with a 2/4 time signature. It consists of an ascending eighth-note scale followed by a descending eighth-note scale, ending with a whole note F.

36 Bb Major

Eighth staff of music for Bb Major scale, starting at measure 36. The key signature has two flats (Bb and Eb). The scale is written in bass clef with a 2/4 time signature. It consists of an ascending eighth-note scale followed by a descending eighth-note scale, ending with a whole note Bb.

41 Eb Major

Ninth staff of music for Eb Major scale, starting at measure 41. The key signature has three flats (Bb, Eb, and Ab). The scale is written in bass clef with a 2/4 time signature. It consists of an ascending eighth-note scale followed by a descending eighth-note scale, ending with a whole note Eb.

46 Ab Major

Tenth staff of music for Ab Major scale, starting at measure 46. The key signature has four flats (Bb, Eb, Ab, and Db). The scale is written in bass clef with a 2/4 time signature. It consists of an ascending eighth-note scale followed by a descending eighth-note scale, ending with a whole note Ab.

51 Db Major

Eleventh staff of music for Db Major scale, starting at measure 51. The key signature has five flats (Bb, Eb, Ab, Db, and Gb). The scale is written in bass clef with a 2/4 time signature. It consists of an ascending eighth-note scale followed by a descending eighth-note scale, ending with a whole note Db.

56 Gb Major

Twelfth staff of music for Gb Major scale, starting at measure 56. The key signature has six flats (Bb, Eb, Ab, Db, Gb, and Cb). The scale is written in bass clef with a 2/4 time signature. It consists of an ascending eighth-note scale followed by a descending eighth-note scale, ending with a whole note Gb.

String bass

2

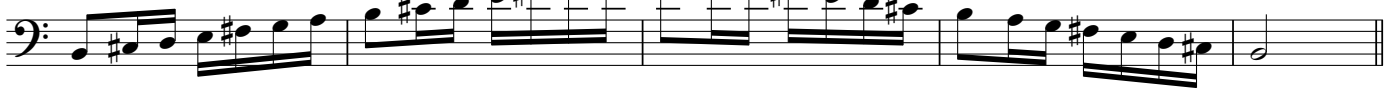
61 a minor



66 e minor



71 b minor



76 f# minor



81 c# minor



86 d minor



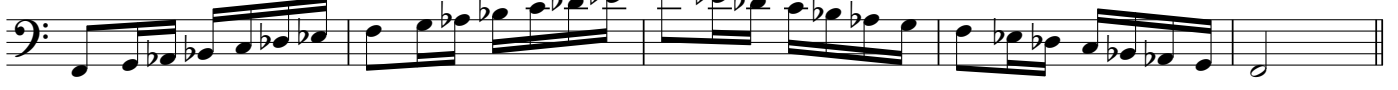
91 g minor



96 c minor



101 f minor



106 F to F₃ Chromatic Scale



110

